

SOLD



55/2916 Gold Coast Highway, Surfers Paradise

Only 2 units on this floor - Large balcony - Pet friendly - Vacant possession

Enjoy the convenience of being situated halfway between the Broadbeach and Surfers Paradise shopping, dining and entertainment precinct's and just minutes' walk to the G-Link light rail station and beautiful beaches.

Sitting on the 16th floor with breathtaking river, ocean, mountain and skyline views - this sky home has many great features -

- * Spacious open plan living and dining area with 180 degree views.

- * Ocean view kitchen....

...

2 2 1

Price: \$660,000

View: <https://remaxpropertycentre.com.au/7013314>

Danny Woolbank

M 0414 946 127



KB Seo

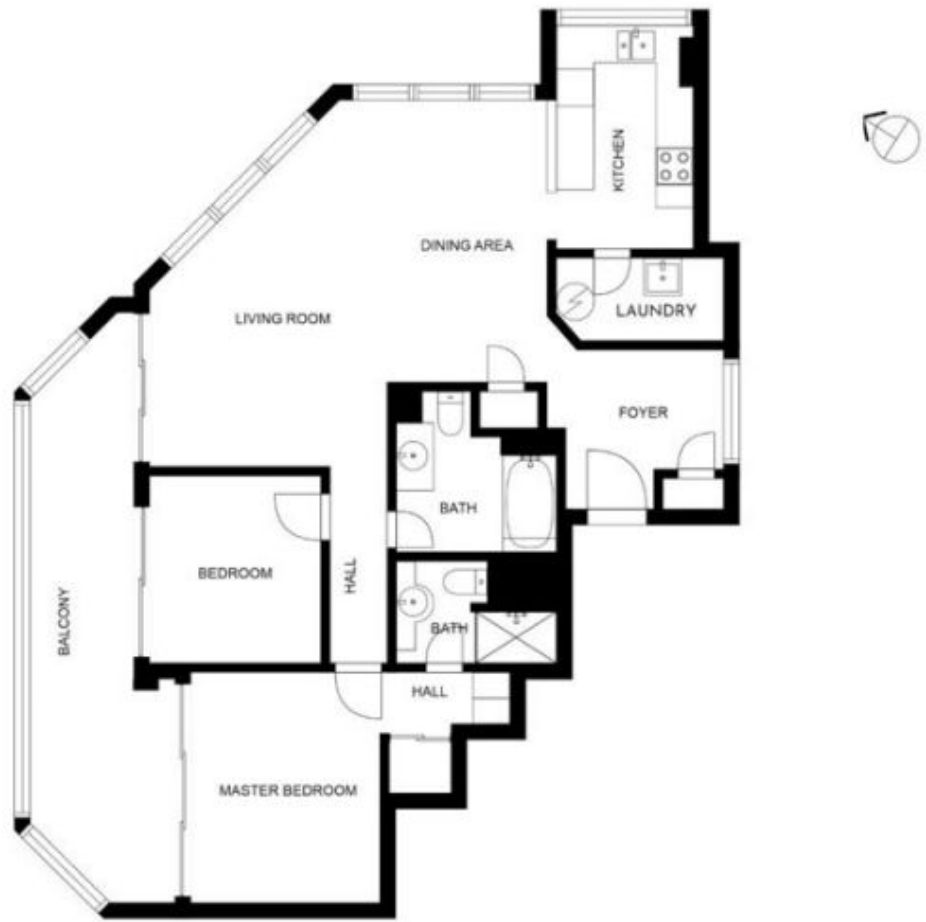
0431 142 818



RE/MAX Property Centre

Shop 6/110 Monaco Street

07 5629 7735



RE/MAX

Estimated areas
 GLA FLOOR 1: **105** m², excluded 16 m²
 Total GLA 101 m², total scanned area **121** m²

SIZES AND DIMENSIONS ARE APPROXIMATE, ACTUAL MAY VARY.