

SOLD



10/2916 Gold Coast Highway, Surfers Paradise

Large balcony - Pet friendly - Residential only - Vacant possession

Enjoy the convenience of being situated halfway between the Broadbeach and Surfers Paradise shopping, dining and entertainment precinct's and just minutes' walk to the G-Link light rail station and beautiful beaches.

Sitting on the 3rd floor with direct river views, this quality home has many great features -

- * Spacious open plan living and dining area with stunning river views.

- * Top quality kitchen looking straight down the river plus butlers pantry....

...

2  2  1 

Price: \$725,000

View: <https://remaxpropertycentre.com.au/6887709>

Danny Woolbank

M 0414 946 127



KB Seo

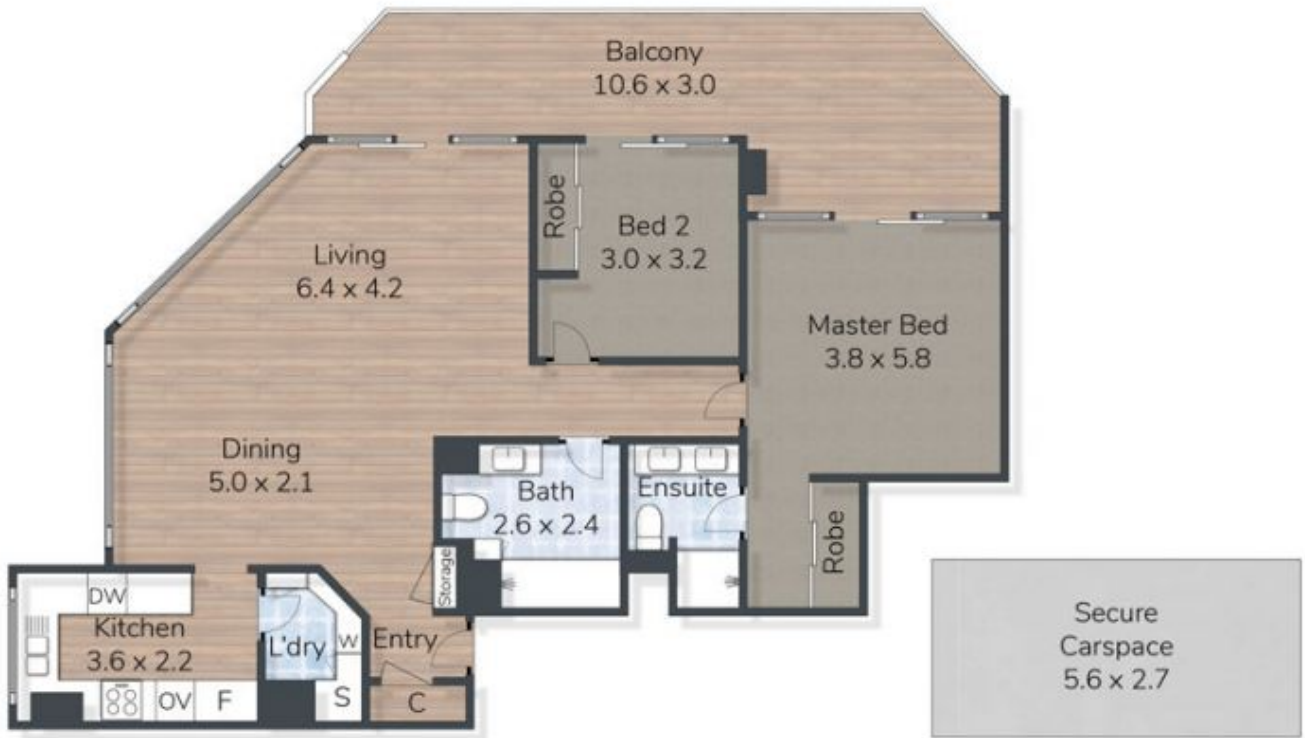
0431 142 818



RE/MAX Property Centre

Shop 6/110 Monaco Street

07 5629 7735



10-2916 Gold Coast Highway
Surfers Paradise

Approximate total
Internal 96m² | External 38m² | Total 134m²

Please note this floor plan is for marketing purposes only. Dimensions and layout are approximate. Mounthort Media gives no guarantee or warranty over the accuracy of this plan, interested parties should make their own enquiries.

